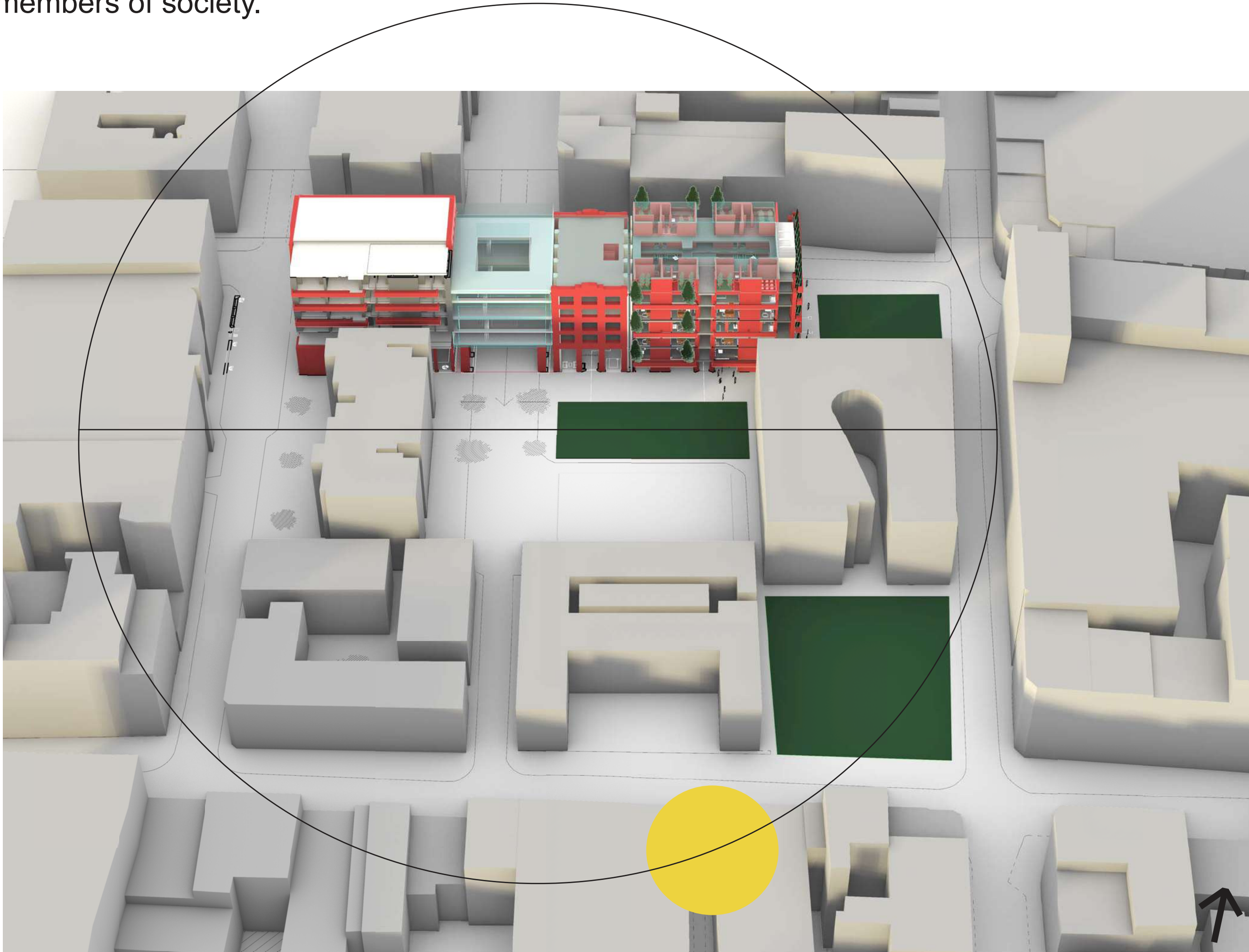


“During the 21st century work is creeping into our domestic lives. I propose that they should be separated spatially and programmatically using indoor, outdoor formal interventions inorder to increase overall human productivity.”



“The option to live and work closer together has increased in popularity for the sustainability of relationships and communities with the city still being the prime place for access to opportunities and services.”

“The masterplan proposes to attract vulnerable people from economically deprived areas of the inner city and provide them with services to care for them and re-skill them inorder to redistribute them around the city as more independent and stronger members of society.”



“By enhancing the architectural experience of the rehabilitation centre, with **nature** and **technology**, I can make programmatic and spatial separations in a more unconventional and uninstitutional way, increasing rehabilitation performance.”



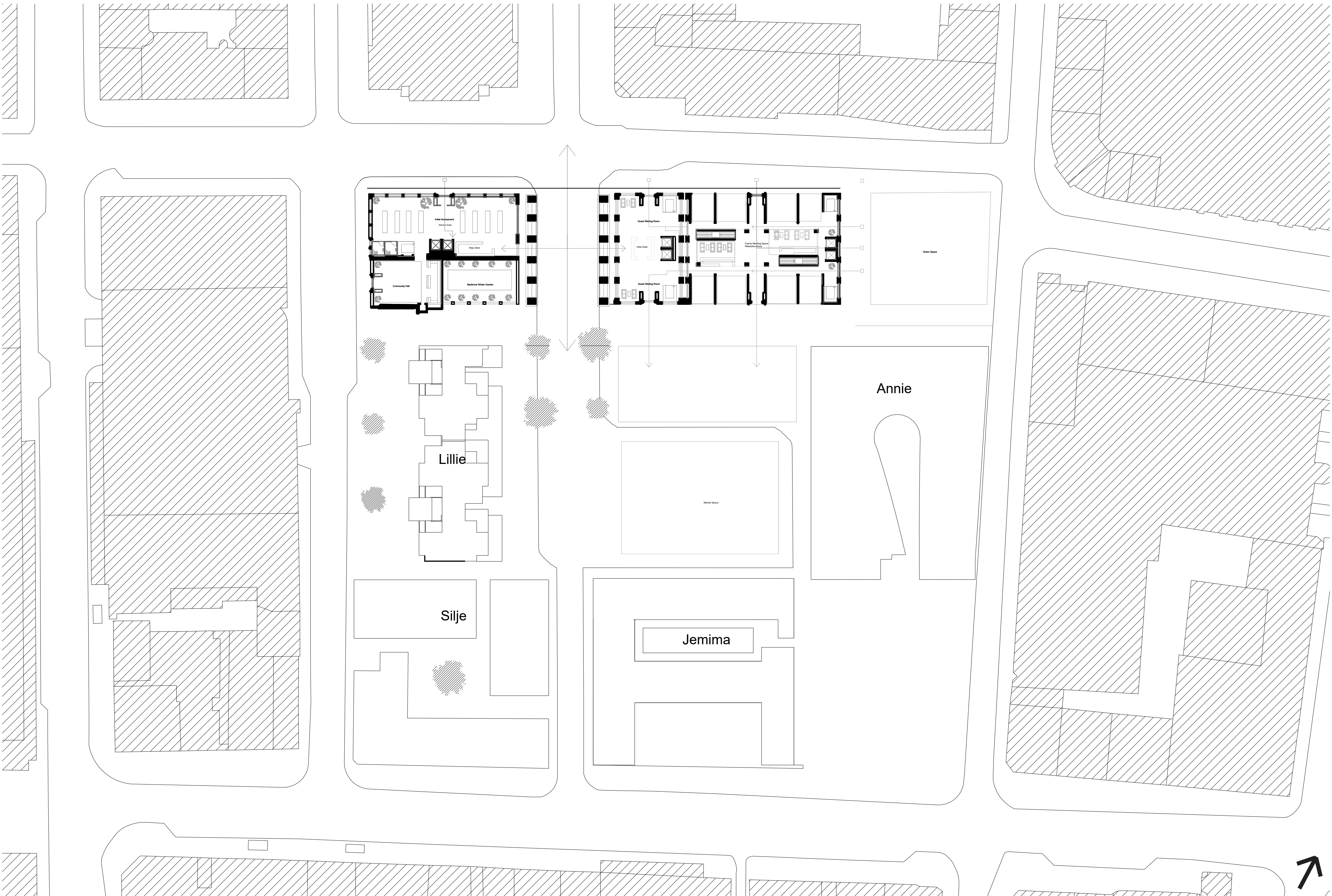
Depravation Map, Rehabilitation Centres 1: 10,000



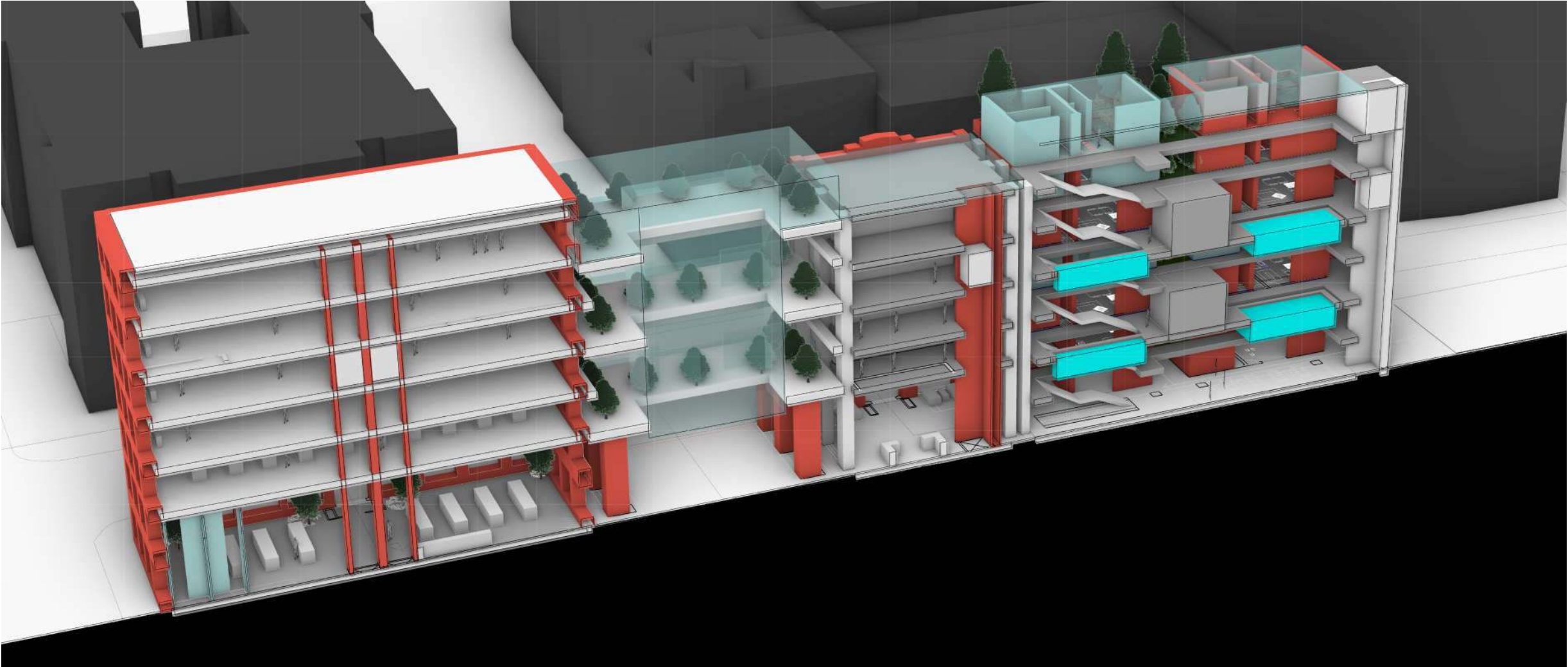
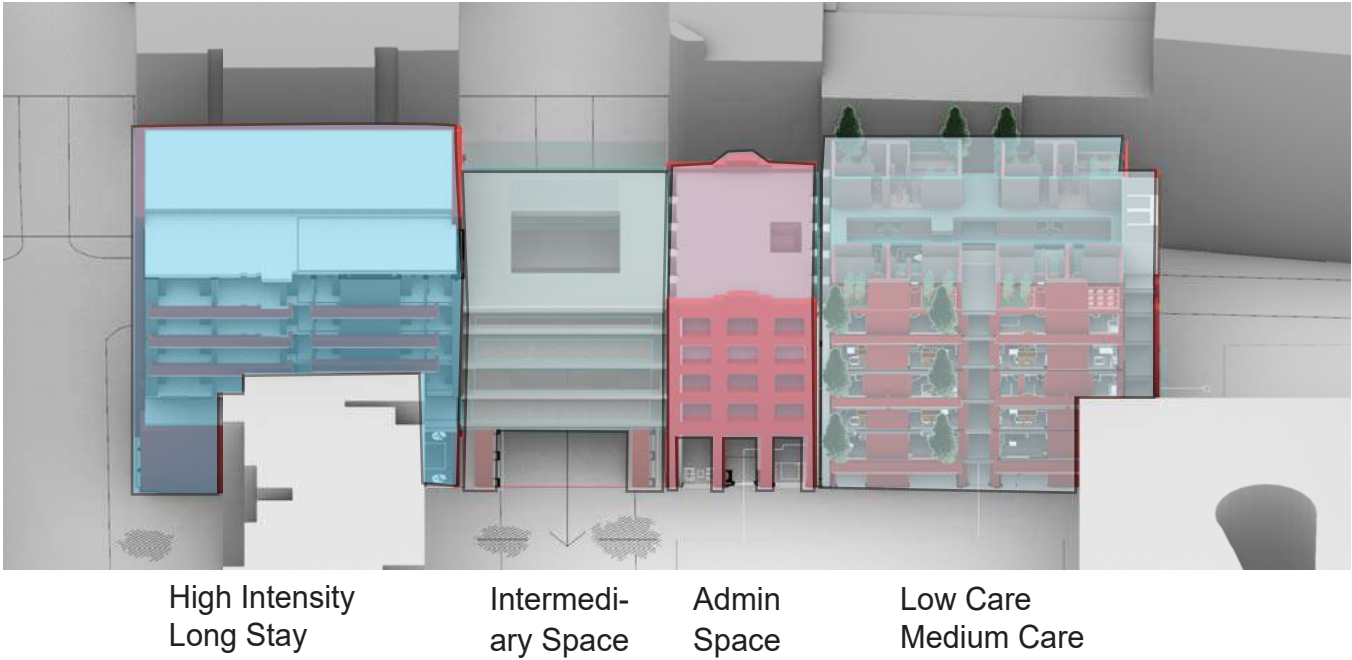
Green, 3D printing, Swimming Pools 1: 10,000



Masterplan 1:500

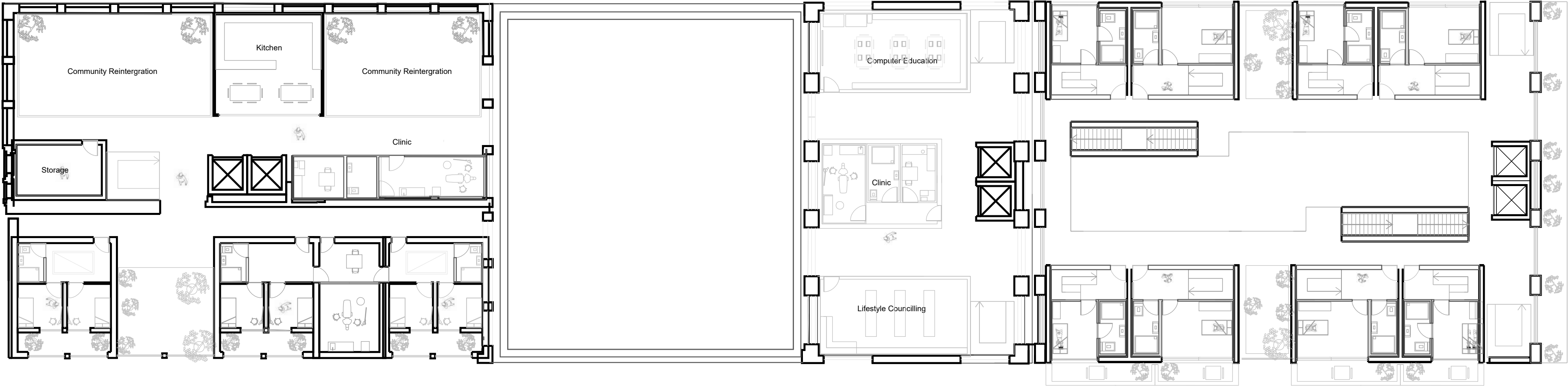


Programme, Nature and Technology



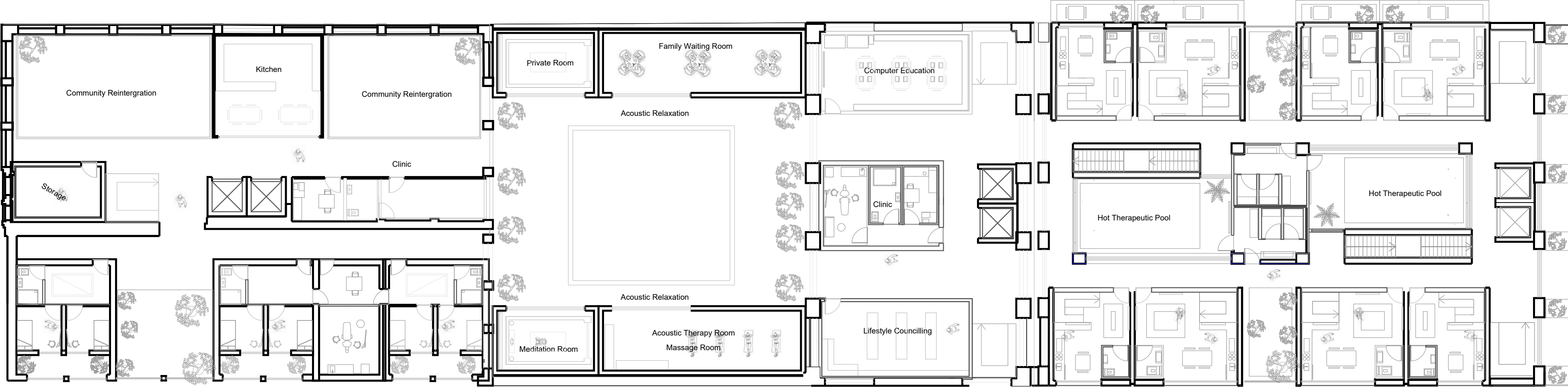
Rehabilitation Centre Groot Klimmendaal / Koen van Velsen

4

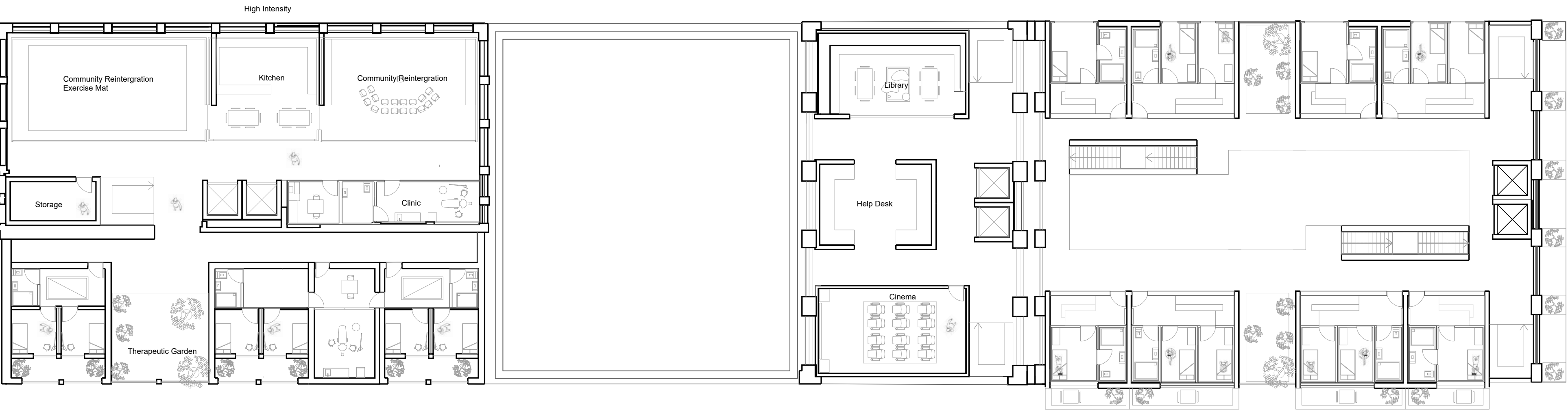


24 hour staff cover on call
Tablet to communicate with professionals at any time

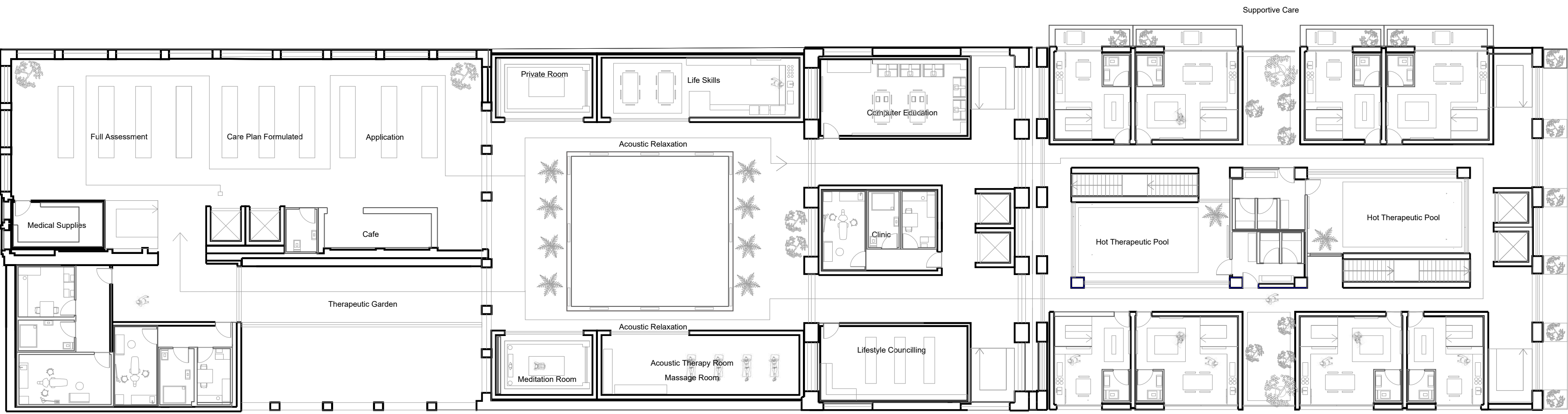
3



2

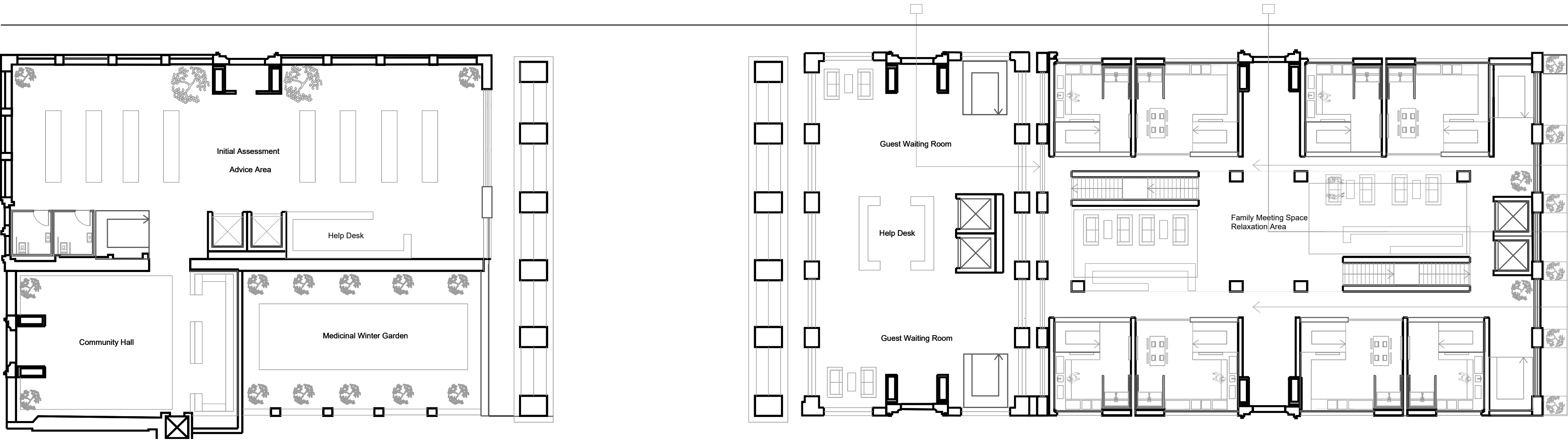


1

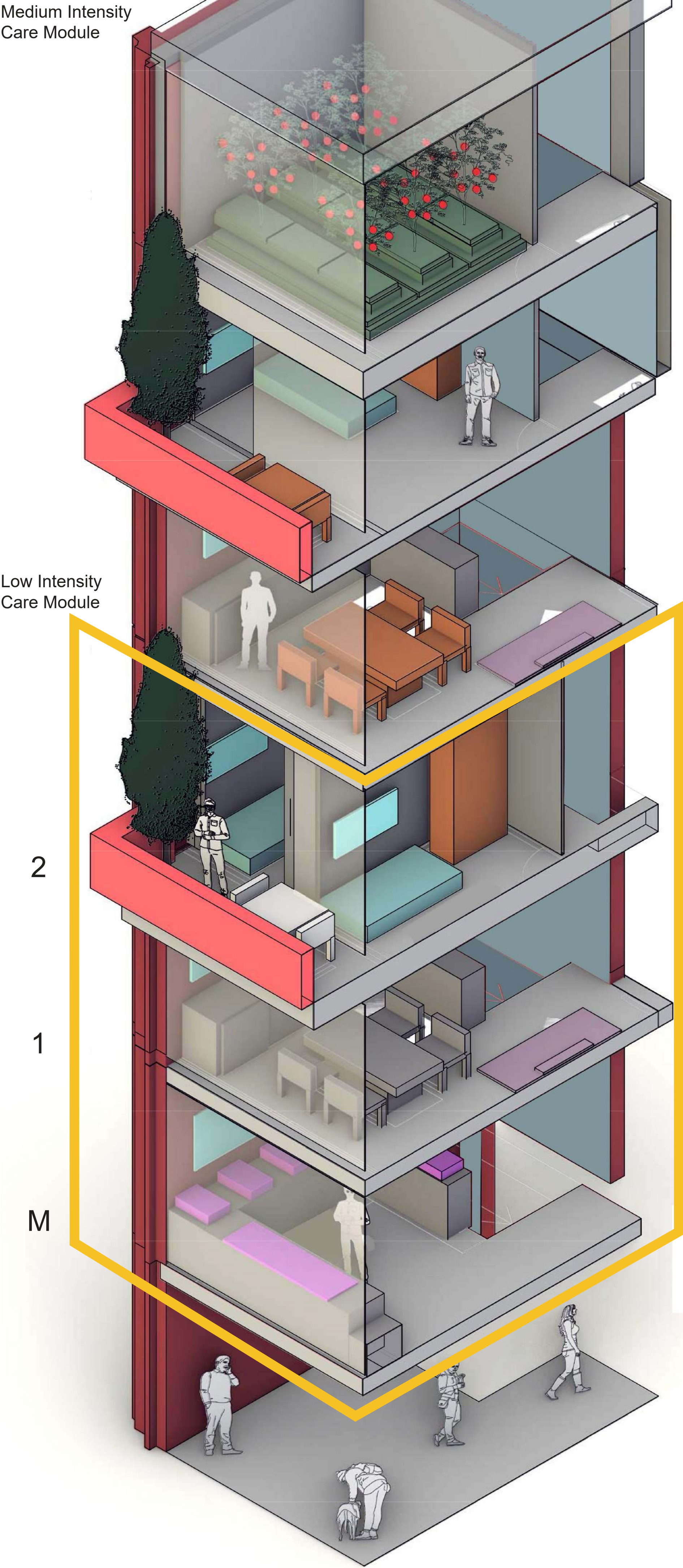


Clinic For
Assisted withdrawal
Stabilisation and Detoxification

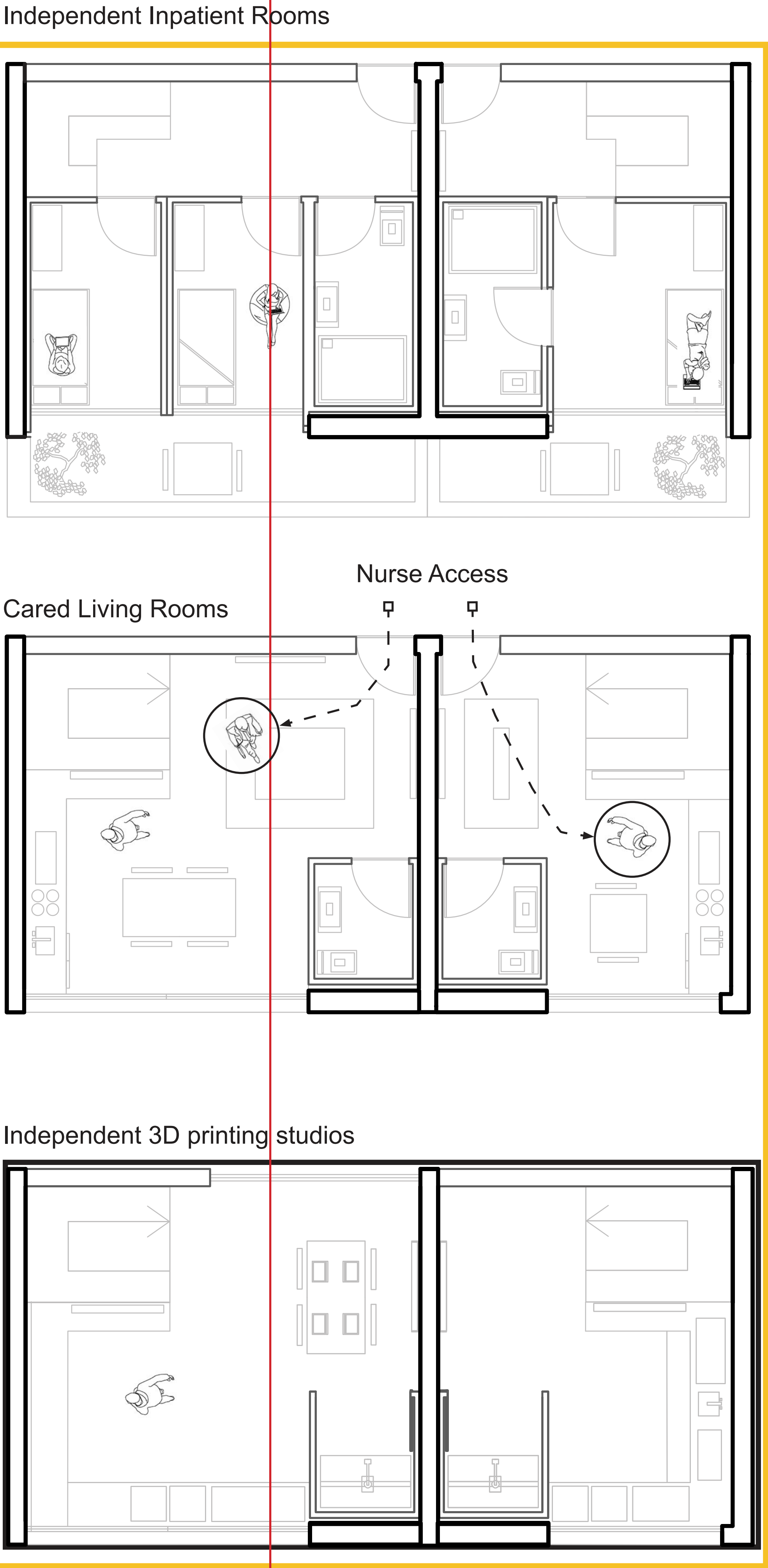
M



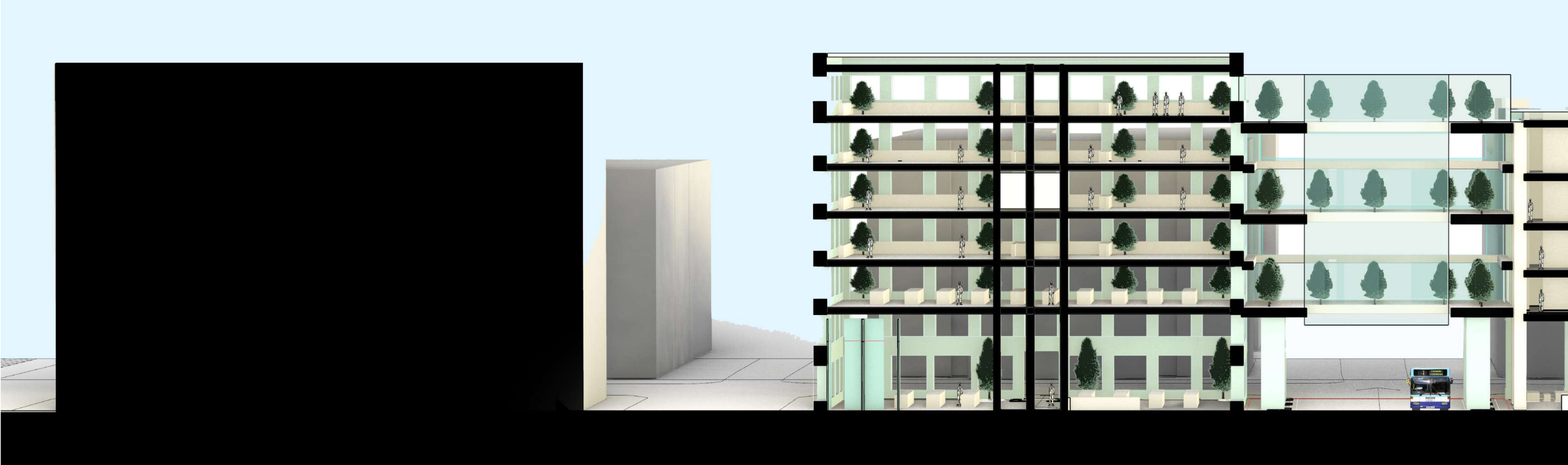
Axo Section 1:50

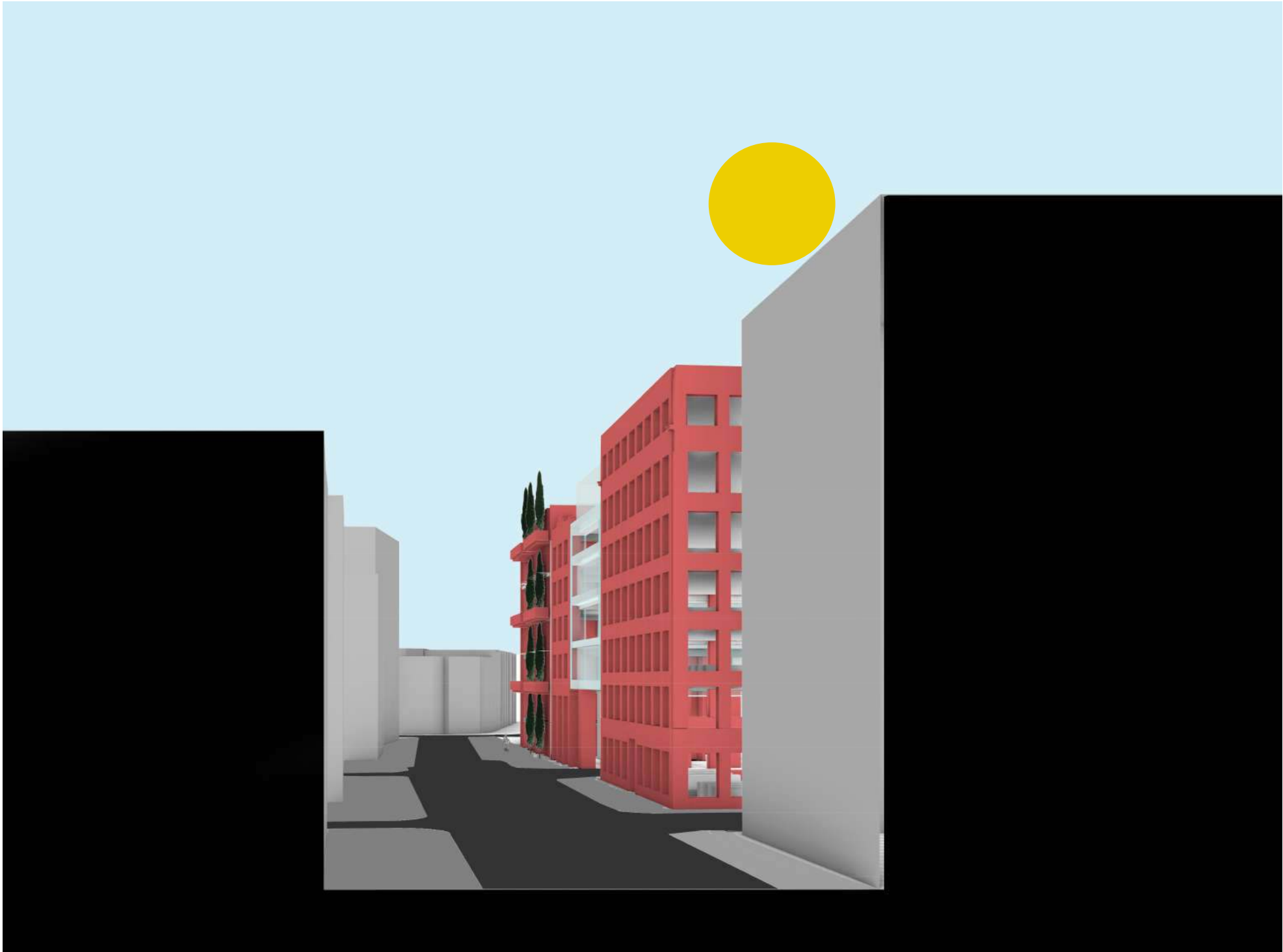
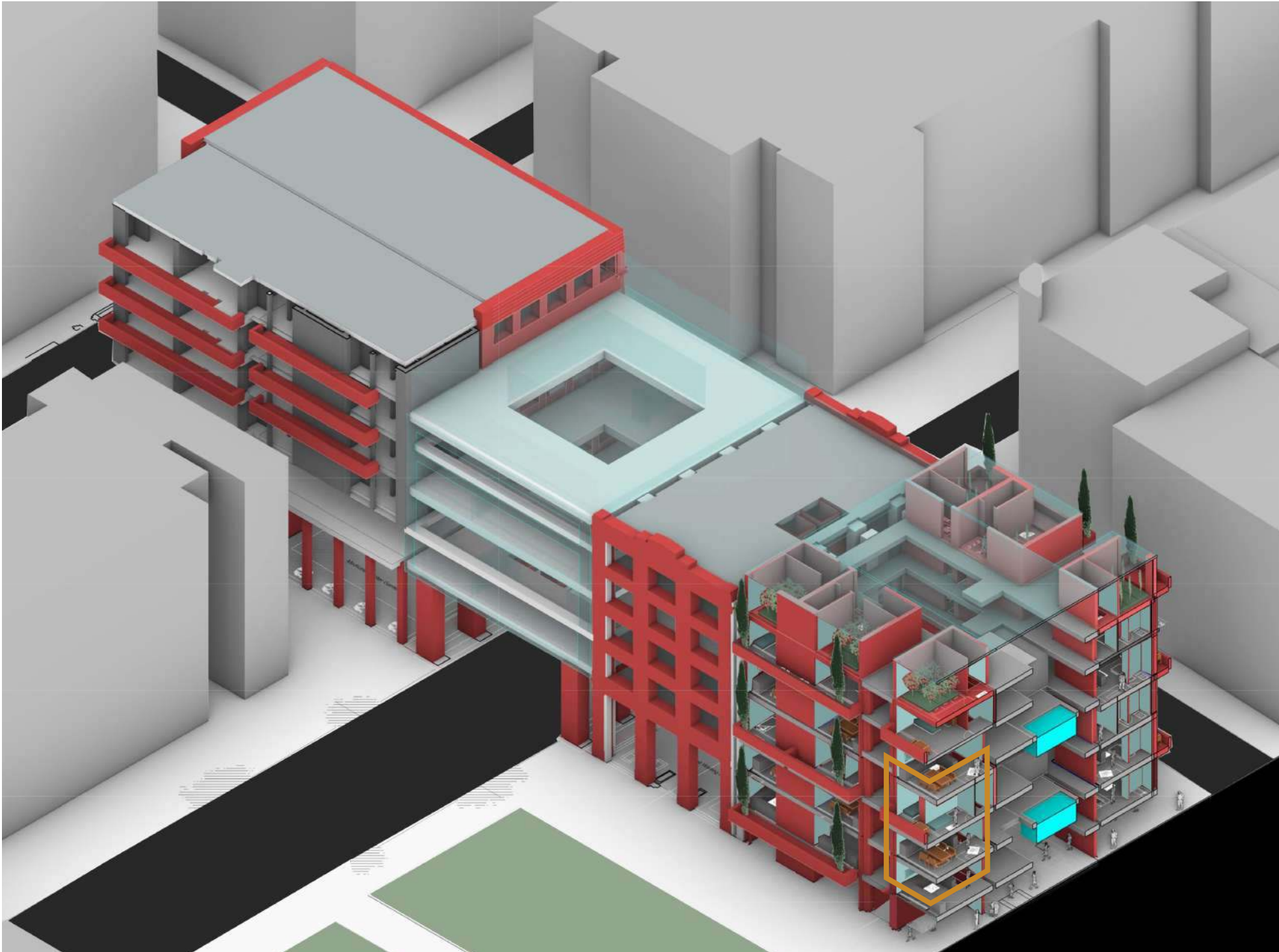


Archetypal Flat Plan (Low Intensity Care) 1:50

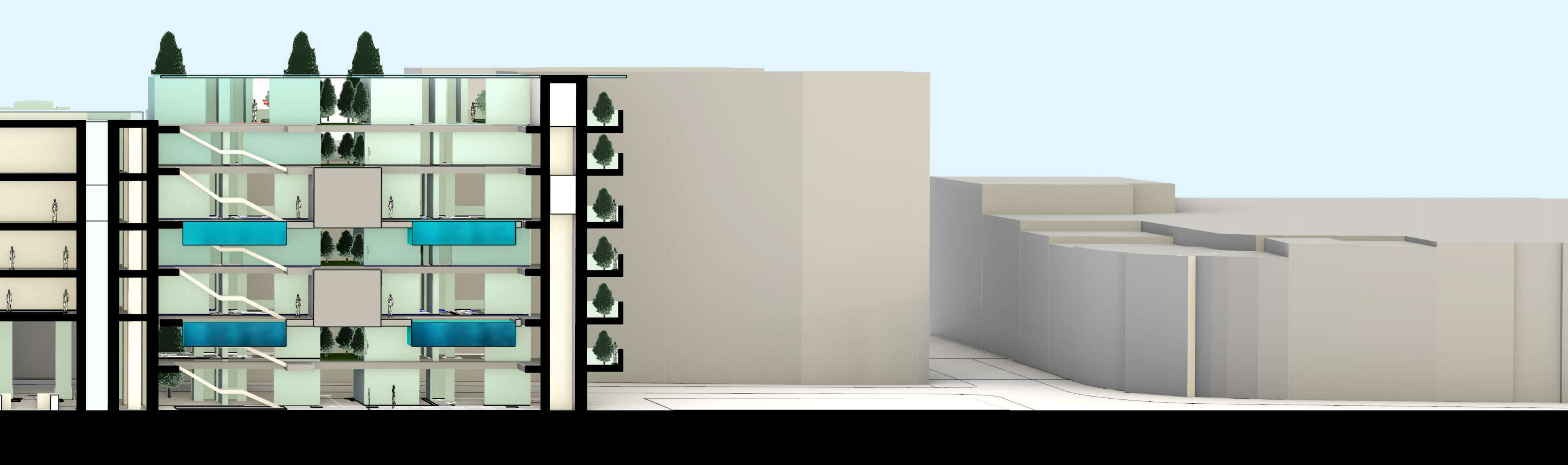
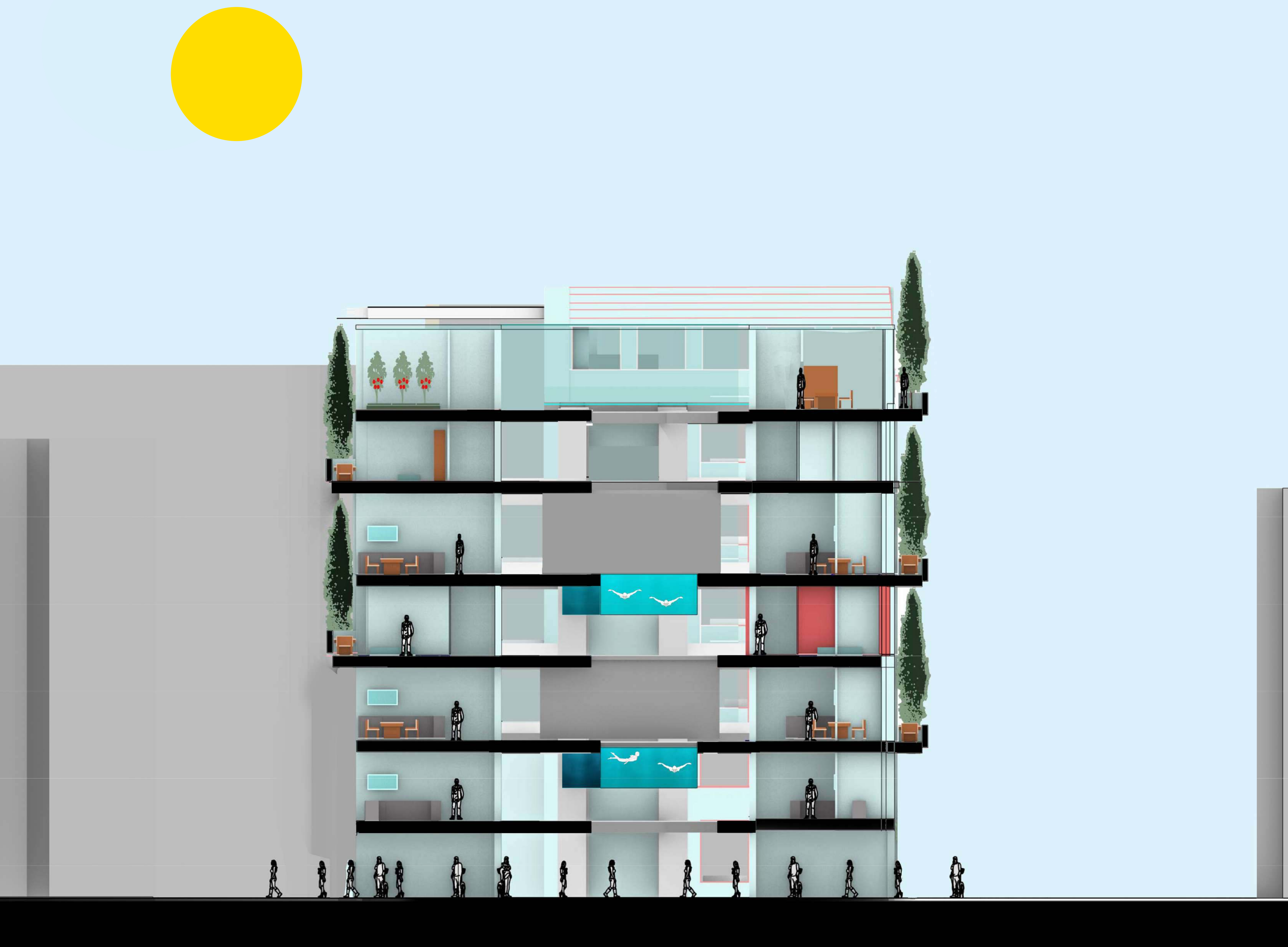


Section 1:200

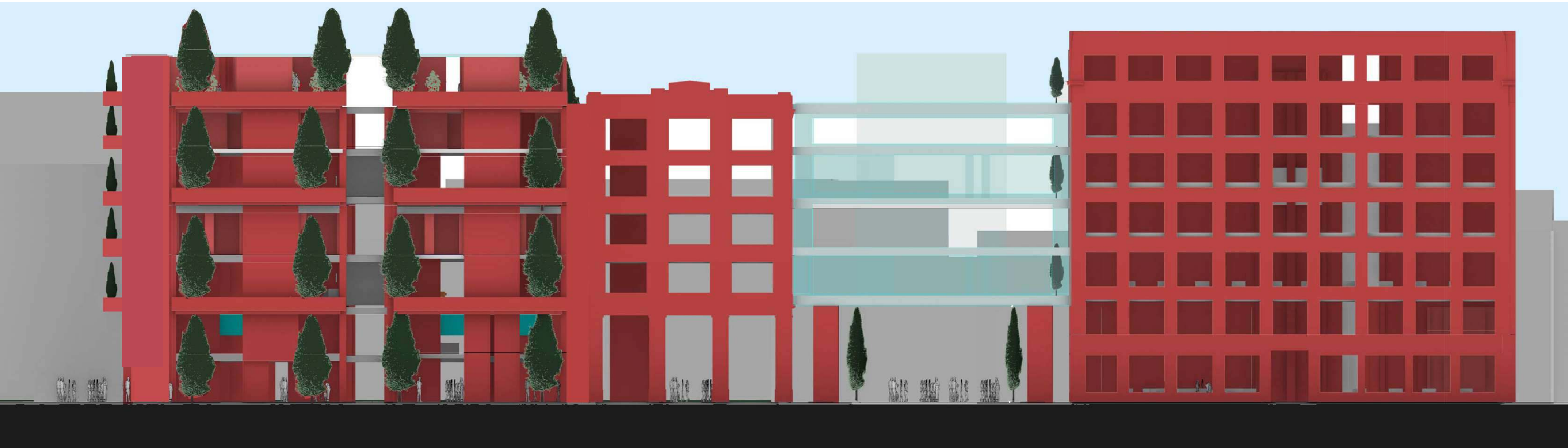




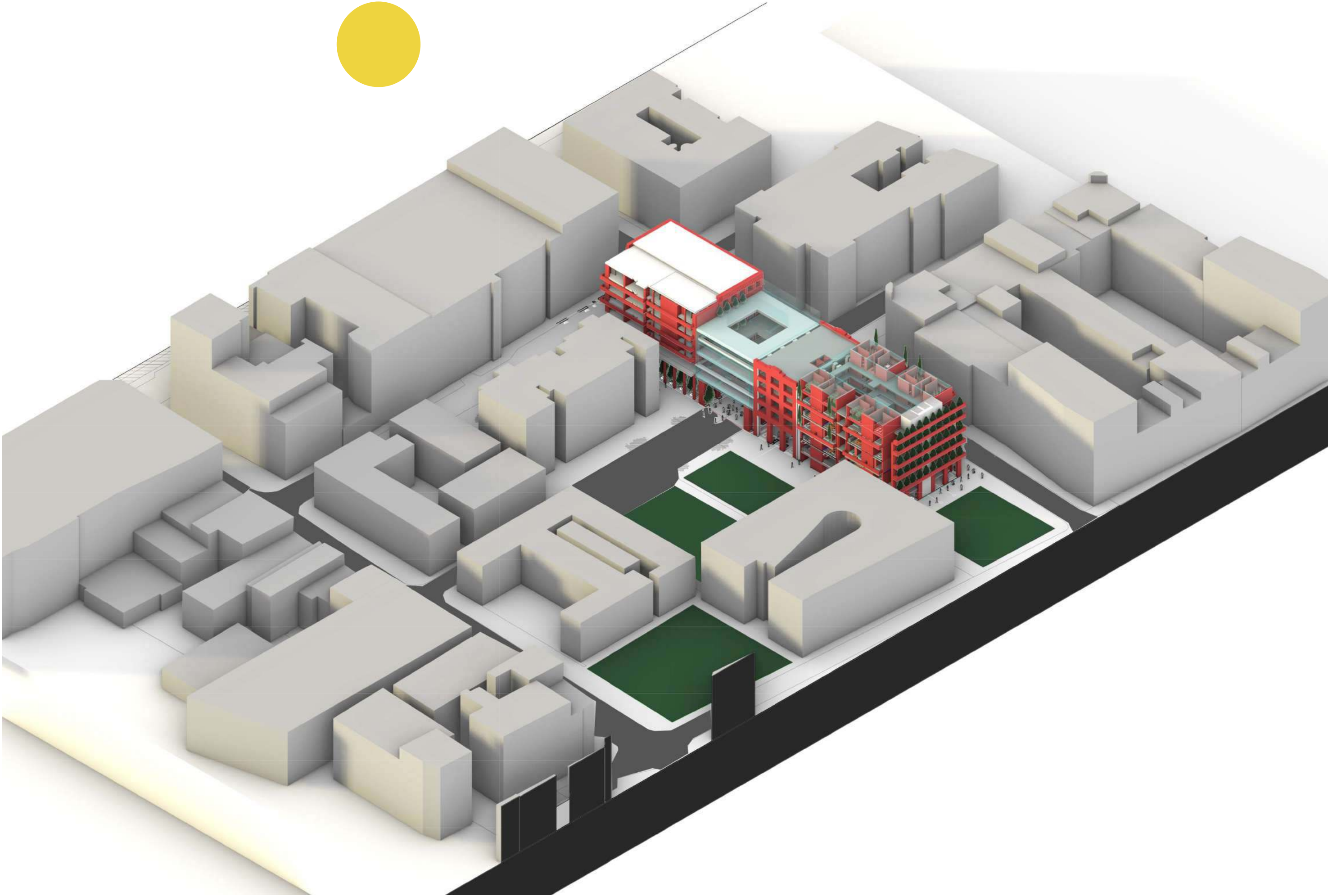
Cross-Section 1:100



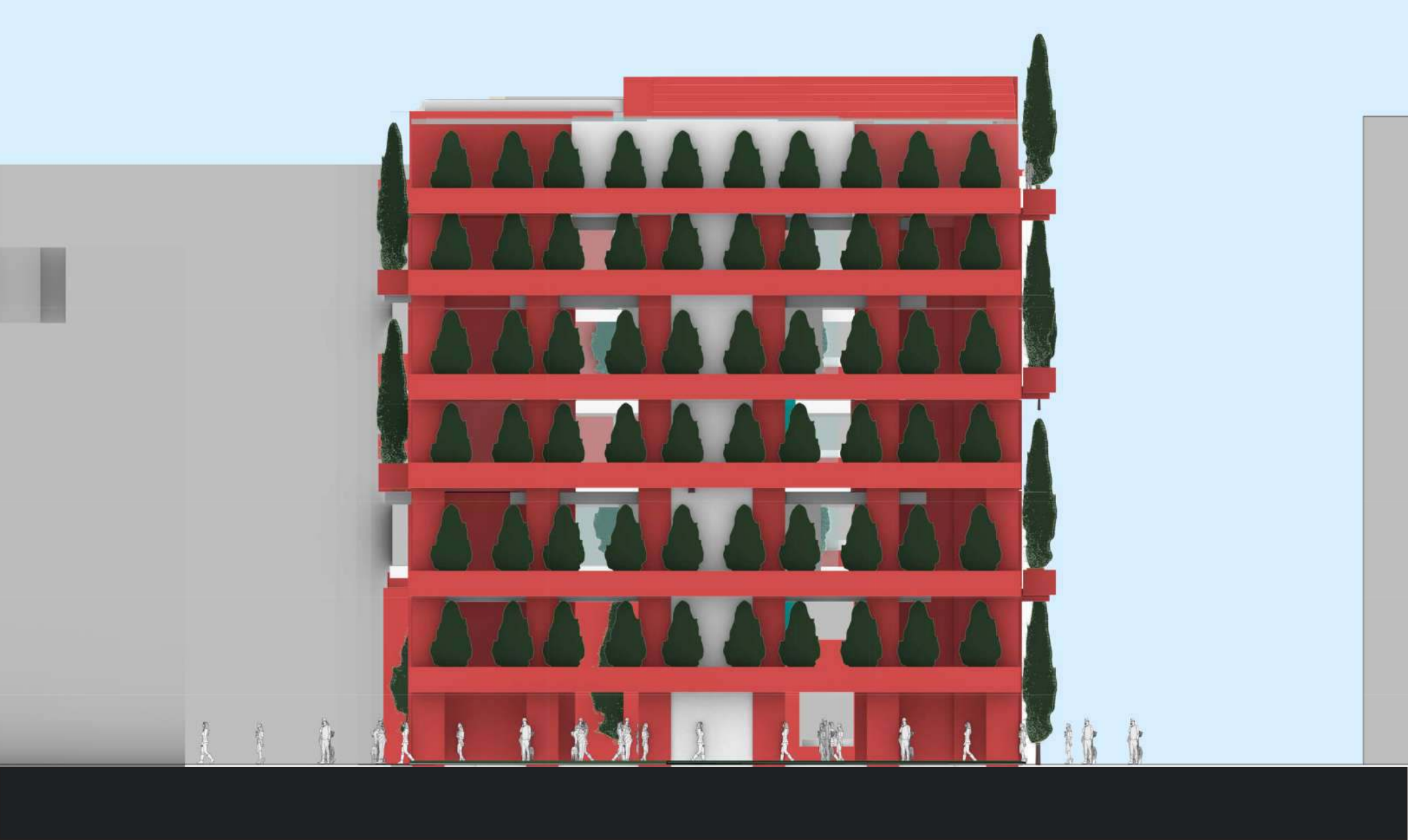
Front Elevation Wilson Street 1:200



Section 1:200



Winter Elevation Candleriggs 1:200



Summer Elevation Candleriggs 1:200

