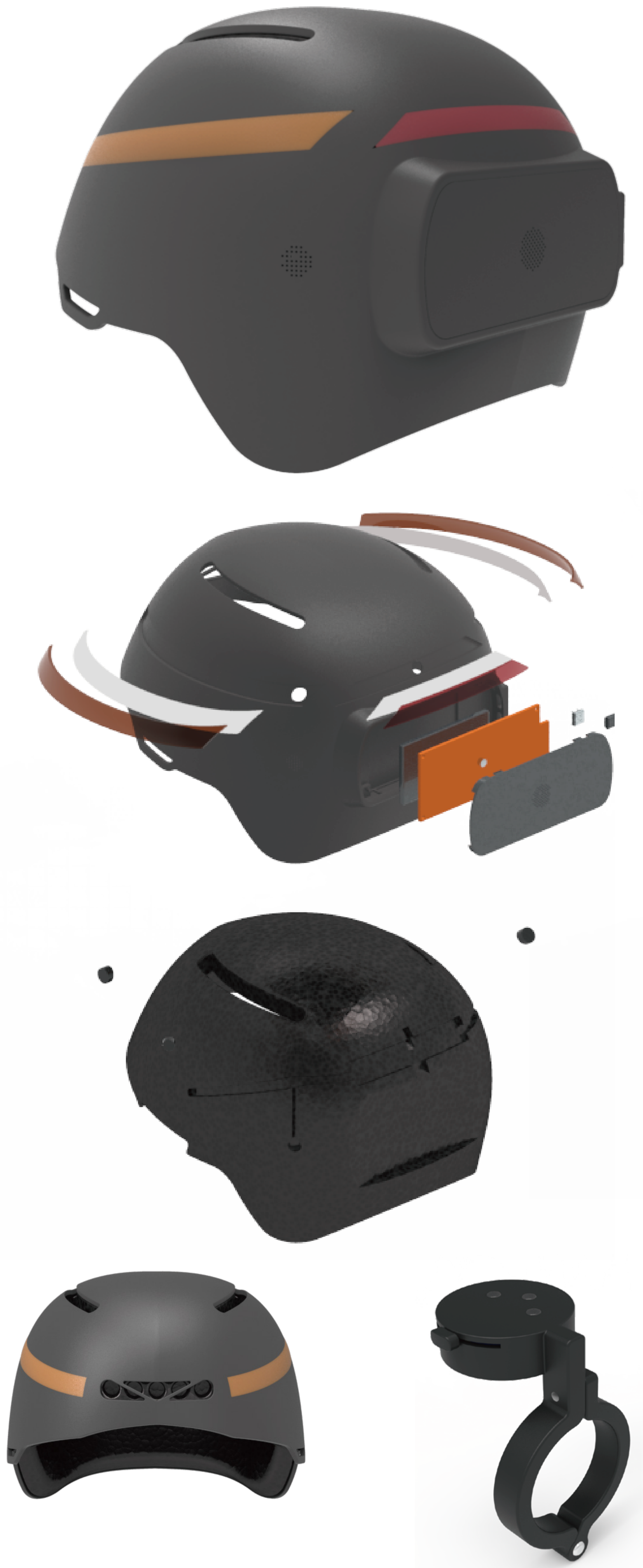
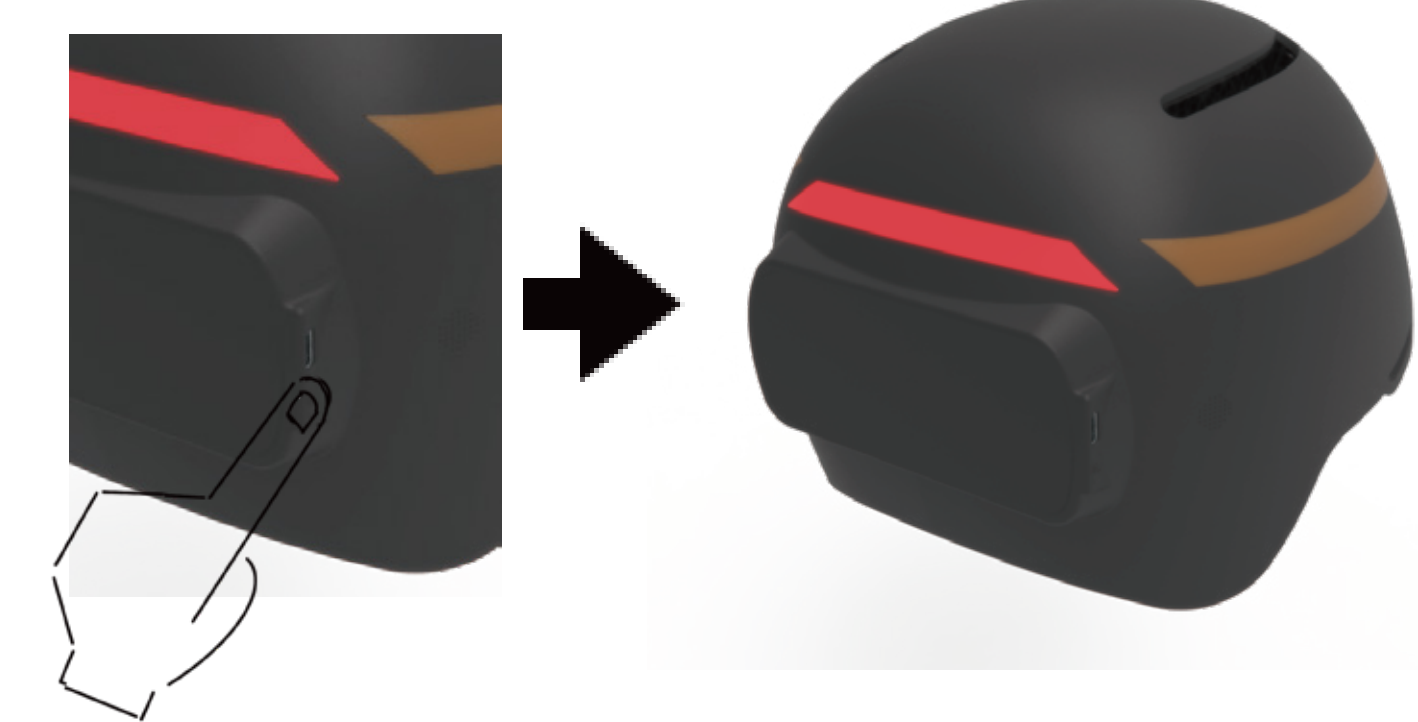


# Smart Helmet for Unilateral Hearing Loss

This is a smart helmet with an accessory to improve safety problems and meet requirements of cycling for people with unilateral hearing loss, so that they can enjoy cycling safely and happily. People with unilateral hearing loss can not judge the direction of sound source by hearing, so they will feel anxious when riding. And can't hear the direction of the car horn, there is the possibility of causing danger. This product help target people locate the car horn and convey their riding situation. At the same time, it will benefit other people and encourage more people to choose bicycle as a means of transportation.



Switch on

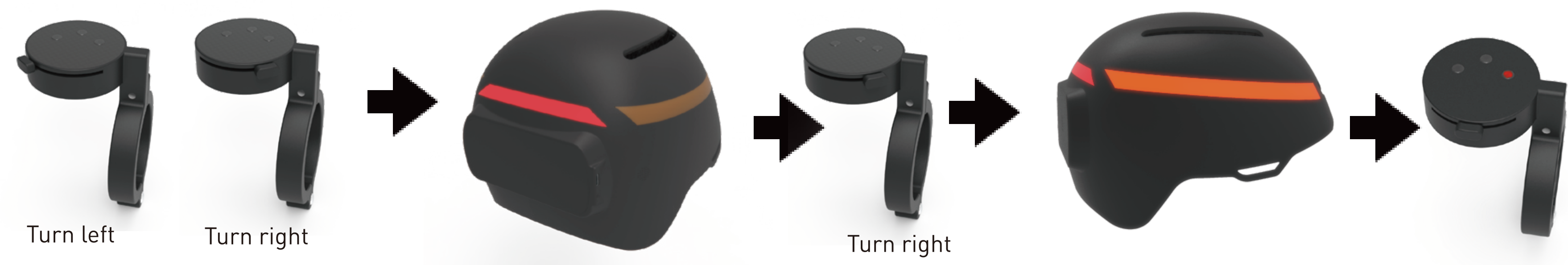


Brake warning light



Detect accelerometer

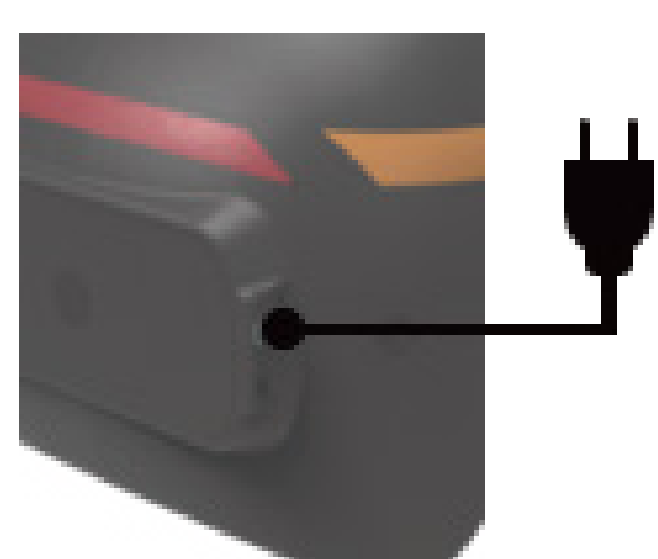
Turn signals



Detect sound direction



Charge



It's going to run out of power



Accessories can be installed on the handlebar according to the user's habits. The accessory is connected to the helmet via Bluetooth. When the helmet is powered on for the first time, it will be automatically connected by pressing the helmet power for a long time. There are four main functions: first, locate the sound of the car horn near the rear, and give feedback the direction of the horn to the user through the vibration module. The second is to turn on the turn signal through accessory and turn off the light automatically after turning. Third, when the user decelerates sharply, the three LED strips light up at the same time. Fourth, after the power is turned on, the red LED strip will light up automatically to warn the surrounding vehicles not to approach the users. The light belt can also be seen from the front and side, which is convenient for pedestrians to observe the driving trend of bicycles when crossing the road. Especially in some T-junctions, or where there are no bicycle lanes and traffic lights.

